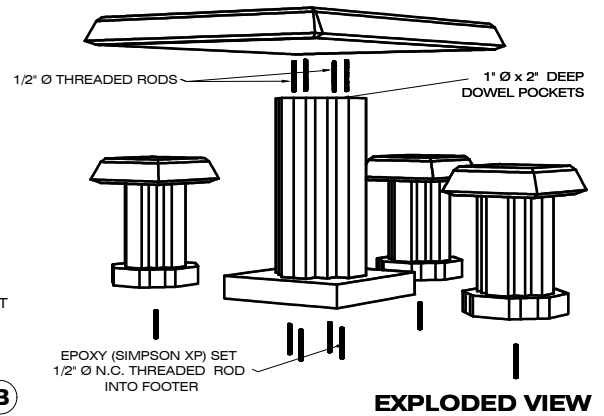
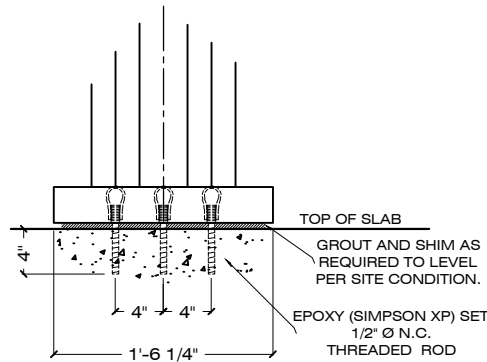
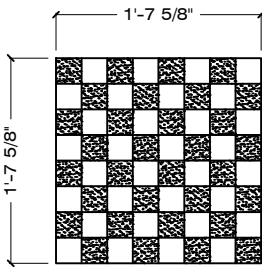
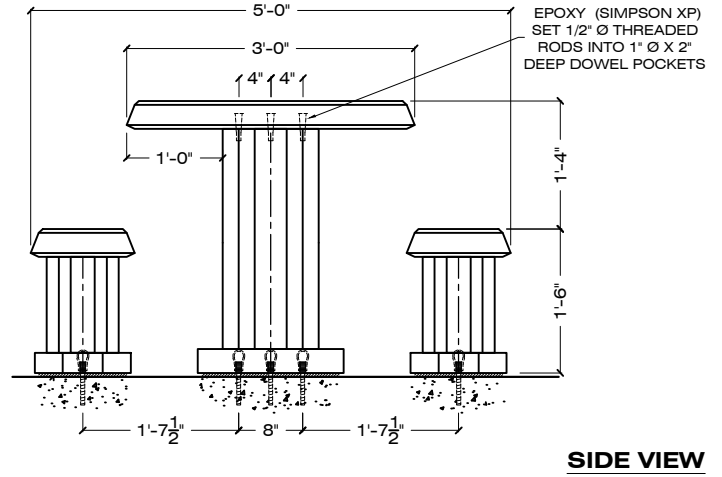
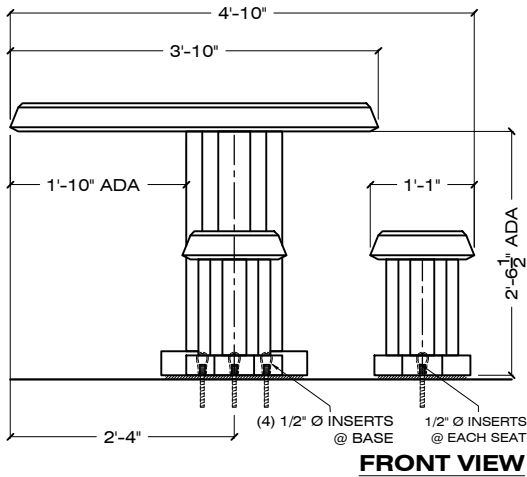


ITEM **S-3PT-90**



PICNIC TABLES - ON SITE ASSEMBLY REQUIRED

1/2" = 1' - 0

ADA COMPLIANT

ORDER CODE: S - 3 - PT-90 - B - S-1 - LSB / AE

LENGHT IN FEET | MOUNTING OPTION | FINISH
 PRECAST CONCRETE | DESIGN | COLOR | FINISH EXAMPLE TOP OF BENCHES & TABLES RECEIVE MATTE SEALER

SPECIFICATIONS :

MATERIAL : PRECAST CONCRETE
REBAR : #3 BAR
WEIGHT : TABLE 485 LBS
 TABLE BASE EA. 320 LBS
 (3) SEATS EA. 140 LBS
TOTAL WEIGHT 1,225 LBS

COLOR : S-1 S-2 S-3 S-4 S-5 S-6 S-7 S-8 S-9
 S-10 S-11 S-12 S-13 S-14 S-15 S-16 S-17 S-18

FINISH : SK / AE / LSB / MSB

DIMENSIONS : 60" L X 58" W X 34" H

APPROVED BY : _____

SK: SMOOTH / AE: ACID ETCH / LSB: LIGHT SANDBLAST / MSB: MEDIUM SANDBLAST

CONTACT: CORPORATE / ADMINISTRATIVE: 650 965 7100

www.duraartstone.com